

# Clarke®

## WOODWORKER



### ROUTER TABLE

### MODEL NO: CRT1030

PART NO: 6462082

### OPERATION & MAINTENANCE INSTRUCTIONS



ORIGINAL INSTRUCTIONS

GC0625

# INTRODUCTION

Thank you for purchasing this CLARKE Router Table designed for DIY use only and is ideal for use with a CLARKE CR4 or Clarke CR1200, or other similar routers up to 180mm dia base plate.

Before attempting to use this product, please read this manual thoroughly and follow the instructions carefully. In doing so you will ensure the safety of yourself and that of others around you, and you can look forward to your purchase giving you long and satisfactory service.

## SPECIFICATION

<b>Model</b>	<b>CRT1030</b>
Part Number	6462082
Product dimensions (L x W x H)	1030 x 370 x 460 mm
Weight	11.3 kg
Extract port size	69mm outside dia

## ENVIRONMENTAL RECYCLING POLICY



Through purchase of this product, the customer is taking on the obligation to deal with the WEEE in accordance with the WEEE regulations in relation to the treatment, recycling & recovery and environmentally sound disposal of the WEEE.

In effect, this means that this product must not be disposed of with general household waste. It must be disposed of according to the laws governing Waste Electrical and Electronic Equipment (WEEE) at a recognised disposal facility.

## GUARANTEE

This product is guaranteed against faulty manufacture for a period of 12 months from the date of purchase. Please keep your receipt which will be required as proof of purchase.

This guarantee is invalid if the product is found to have been abused or tampered with in any way, or not used for the purpose for which it was intended.

Faulty goods should be returned to their place of purchase, no product can be returned to us without prior permission.

This guarantee does not effect your statutory rights.

---

# GENERAL SAFETY RULES

---



**WARNING: WHEN USING ELECTRIC POWER TOOLS, BASIC SAFETY PRECAUTIONS SHOULD ALWAYS BE FOLLOWED TO REDUCE THE RISK OF FIRE, ELECTRIC SHOCK AND PERSONAL INJURY INCLUDING THE FOLLOWING. READ ALL THESE INSTRUCTIONS BEFORE ATTEMPTING TO OPERATE THIS PRODUCT AND SAVE THESE INSTRUCTIONS FOR FUTURE REFERENCE.**

---

## GENERAL SAFETY IN THE WORKPLACE

1. **ALWAYS** ensure that air can circulate around the machine and that any air vents on the router are unobstructed.
2. **ALWAYS** keep work area clean & tidy. Cluttered work areas and benches invite accidents.
3. **NEVER** over-reach. Keep proper footing and balance at all times.
4. **NEVER** store equipment in a wet/damp environment or expose to rain.
5. Keep bystanders away. **DO NOT** let persons, especially children, not involved in the work, touch the machine or extension cable and keep them away from the work area.
6. **NEVER** operate a machine when under the influence of alcohol, drugs or medication.
7. **ALWAYS** ensure the workplace is well lit. Ensure that lighting is placed so that you will not be working in your own shadow.
8. **DO NOT** use tools in the presence of flammable liquids or gasses.
9. Stay alert, watch what you are doing, use common sense and **DO NOT** operate the machine when you are tired.

## CARE OF POWER TOOLS

1. Read this manual and the router manual carefully. Learn the products applications and limitations, as well as the specific potential hazards peculiar to it.
2. **ALWAYS** keep guards in place and in working order. A guard or other part that is damaged should be properly repaired or replaced by an authorised service centre, unless otherwise indicated in this instruction manual.
3. **DO NOT** force the machine and use the correct tool for the job. It will do the job better and safer, at the rate for which it was intended.
4. **ALWAYS** disconnect the machine from the power supply before carrying out any servicing or changing of accessories.

5. Before further use of the machine, it should be carefully checked to determine that it will operate properly and perform its intended function. Check for alignment of moving parts, binding of moving parts, breakage of parts, mounting or other condition that may affect its operation.
6. Have defective switches repaired by an authorised service centre. **DO NOT** use a power tool if the switch does not turn it on and off.
7. **ALWAYS** check for any damage or any condition that could affect the operation of the machine. Damaged parts should be properly repaired.
8. Have your power tool repaired by a qualified person. This power tool complies with the relevant safety rules. Repairs should only be carried out by qualified persons using original spare parts, otherwise this may result in considerable danger to the user.
9. **NEVER** use this product for any other purpose than that described in this manual.
10. **NEVER** abuse the power cable by yanking the cable to disconnect it from the socket. Keep the cable away from heat, oil and sharp edges.
11. Guard against electric shock. **AVOID** body contact with earthed or grounded surfaces.
12. If the machine should be used outdoors, use only extension cables intended for outdoor use and marked accordingly.
13. **AVOID** accidental starting by making sure the power switch is off before plugging in the power cable.


## **ROUTER (ONLY) USE AND CARE**

1. **NEVER** use dull or damaged bits. Keep cutting bits sharp and clean.
2. **DO NOT** force the machine. Use the correct tool for your application.
3. **NEVER** attempt to use bits that have a cutting diameter greater than the opening in the base.
4. After changing bits or making any adjustments, make sure the collet nut and any other adjustment devices are securely tightened.
5. **NEVER** start the bit while it is engaged in the workpiece.
6. **ALWAYS** feed the work piece **AGAINST** the rotation of the router bit.
7. Only use accessories that are recommended by the manufacturer of your router model.
8. Clean the router and table after use. The use of a wet/dry vacuum is recommended.
9. Check the function of the guard before each use. Remove all dust, chips, and any other foreign particles that can affect its function.

## ROUTER TABLE (POWER TOOL & TABLE) USE AND CARE

1. **DO NOT** use this product until all assembly and installation steps have been completed. Make sure you have read and understood all safety and operational instructions in this owner's manual.
2. Make sure that the router bit is properly positioned and clamped in the router before making any cuts.
3. Before use and periodically during use, check all fasteners to make sure that all are tight and secure. Fastenings can become loosened by vibration during use.
4. **DO NOT** use the router table as a workbench or work surface. Doing so may damage it, causing it to be unsafe to use. A workbench should be used for this purpose.
5. This product is designed for cutting flat woodwork pieces only. **DO NOT** attempt to cut work pieces that are rounded or that contain metal or any other non-wood material.
6. Use auxiliary in-feed and out-feed supports when routing long workpieces to prevent the router table from tipping over (if not fixed down) and to ensure the workpiece follows a straight path across the table.
7. **ALWAYS** make sure that the work surface of the router table is clean and free from dust, chips, and foreign particles that can interfere with the cut you are going to make. The use of a wet/dry vacuum is recommended. The fence that comes with the router table has a dust collector to which a wet/dry vac can be attached.
8. **ALWAYS** use the router switch box when turning the router ON or OFF.
9. Before making any cut, make sure the router is turned OFF and the router bit is not rotating. Then make a trial pass to be absolutely sure that the overhead guard clears the router bit and the work piece.
10. **NEVER** leave the router unattended while the router is running. Turn the router OFF before leaving the table for any reason.

## SAFETY SYMBOLS ON THE MACHINE OR PACKAGING

	Read instruction manual before use		Wear ear defenders
	Wear safety glasses		Wear a breathing mask.

# ELECTRICAL CONNECTIONS



**WARNING: READ THESE ELECTRICAL SAFETY INSTRUCTIONS THOROUGHLY BEFORE CONNECTING THE PRODUCT TO THE MAINS SUPPLY.**

Before switching the product on, make sure that the voltage of your electricity supply is the same as that indicated on the rating plate. This product is designed to operate on 230VAC 50Hz. Connecting it to any other power source may cause damage.

This product may be fitted with a non-rewireable plug. If it is necessary to change the fuse in the plug, the fuse cover must be refitted. If the fuse cover becomes lost or damaged, the plug must not be used until a suitable replacement is obtained.

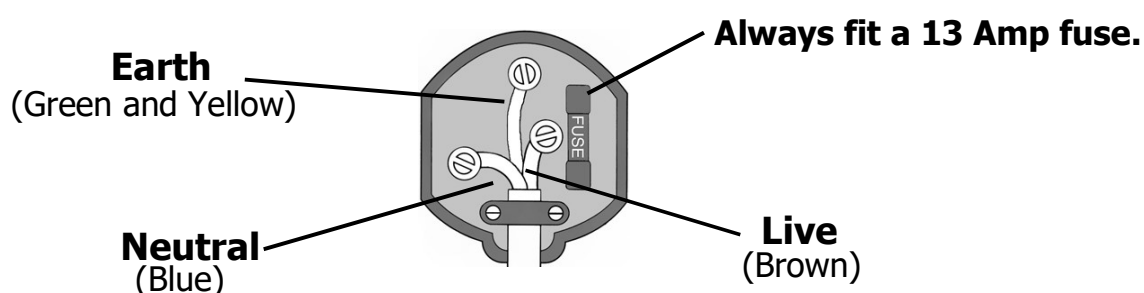
If the plug has to be changed because it is not suitable for your socket, or due to damage, it should be cut off and a replacement fitted, following the wiring instructions shown below. The old plug must be disposed of safely, as insertion into a mains socket could cause an electrical hazard.



**WARNING! The wires in the power cable of this product are coloured in accordance with the following code:  
Blue = Neutral    Brown = Live    Yellow and Green = Earth**

- The wire which is coloured **Blue** must be connected to the terminal which is marked **N** or coloured **Black**.
- The wire which is coloured **Brown** must be connected to the terminal which is marked **L** or coloured **Red**.
- The wire which is coloured **Yellow and Green** must be connected to the terminal which is marked **E** ( $\frac{\square}{\text{—}}$ ) or coloured **Green**.

**Plug must be BS1363/A approved.**

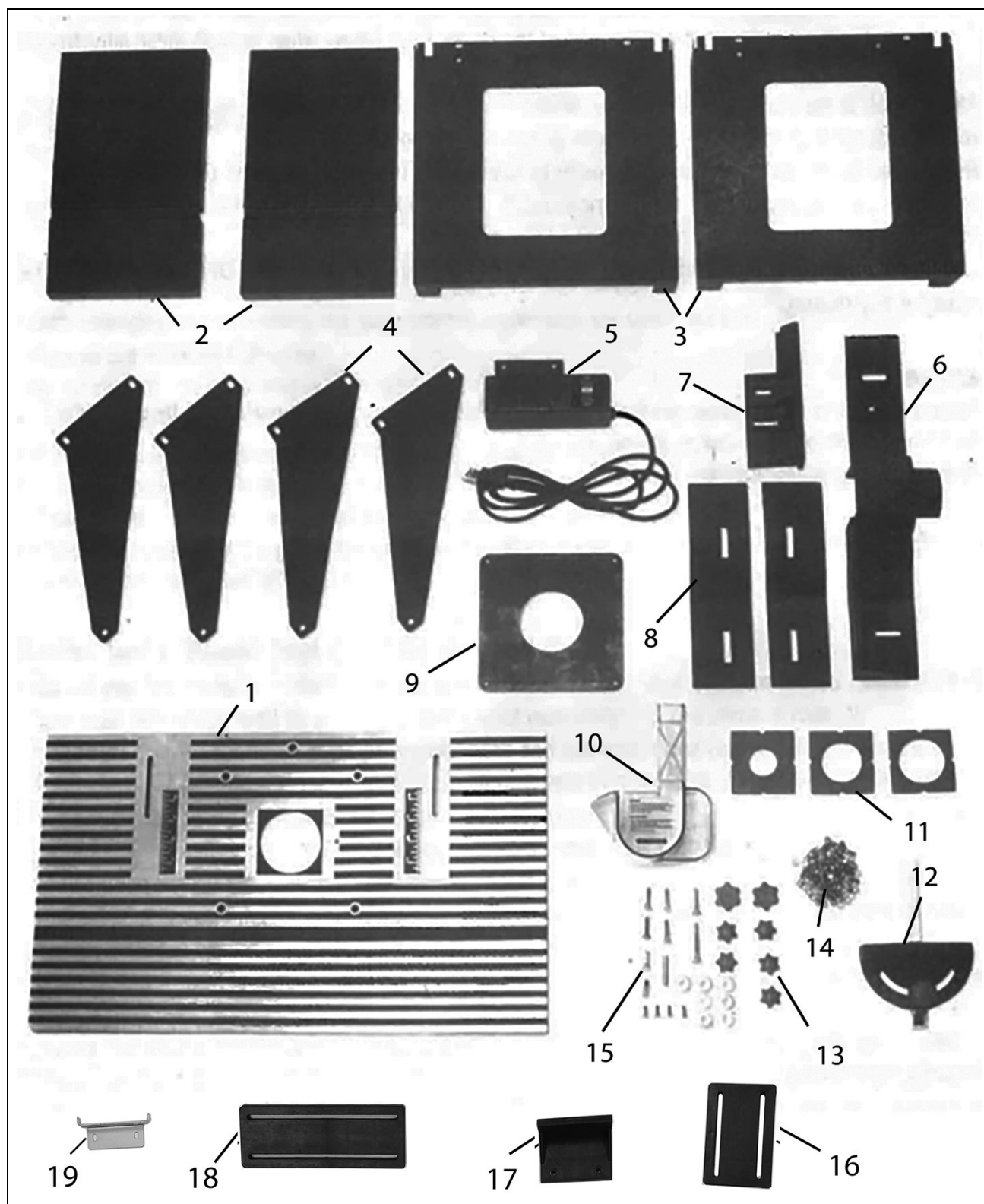


**Ensure that the outer sheath of the cable is firmly held by the clamp**

**WE STRONGLY RECOMMEND THAT THIS MACHINE IS CONNECTED TO THE MAINS SUPPLY VIA A RESIDUAL CURRENT DEVICE (RCD)**

If in any doubt, consult a qualified electrician. **DO NOT** attempt any repairs yourself.

# PRODUCT INVENTORY



Before assembling the table, ensure all components are present. Any shortages etc should be reported to the Clarke dealer where the table was purchased.

## THE FOLLOWING ITEMS SHOULD BE SUPPLIED

1	Table top	11	Table inserts (x3)
2	Table extensions (x2)	12	Mitre assembly
3	Table supports (x2)	13	Finger knobs
4	Table side support plates (x4)	14	Fixings pack - screws/nut/washers
5	Switch assembly	15	Coachbolts/hinge pin/starting pin
6	Main fence /vacuum adaptor bracket	16	Fence feather board
7	Fence bracket	17	Fence feather board bracket
8	Feather plates	18	Table feather board
9	Router adapter plate	19	Table feather board bracket
10	Hinged guard		

## TOOLS REQUIRED

- Standard and Phillips screwdrivers
- Small adjustable wrench (or a set of sockets or wrenches)
- Electric drill
- One or more of the following drill bit sizes: 1/8", 3/16", 1/4", 9/32" or 11/32"
- Countersinking bit

## FASTENINGS SUPPLIED

Size	Qty	Location on product
Round-headed machine screws with nuts & washers	28	Table assembly inc switchbox
Round-headed machine screws	2	Table bracket
Countersunk machine screws	4	Adapter plate to table base
Countersunk machine screws	4	Router to adapter plate
Coachbolt - 25mm with washers & thumb knobs	5	Side fences and adapter bracket
Coachbolt - 35mm with wingnut	4	table plate and vertical plate
Coachbolt - 40mm & thumb knobs	1	Adapter bracket
Hex headed bolts	2	Fence feather board bracket



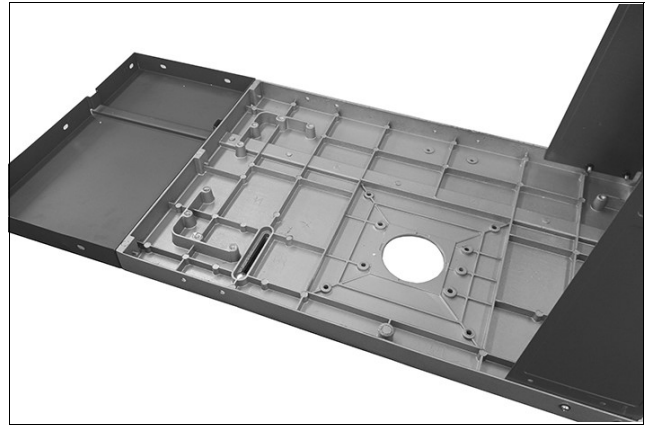
---

# ASSEMBLY

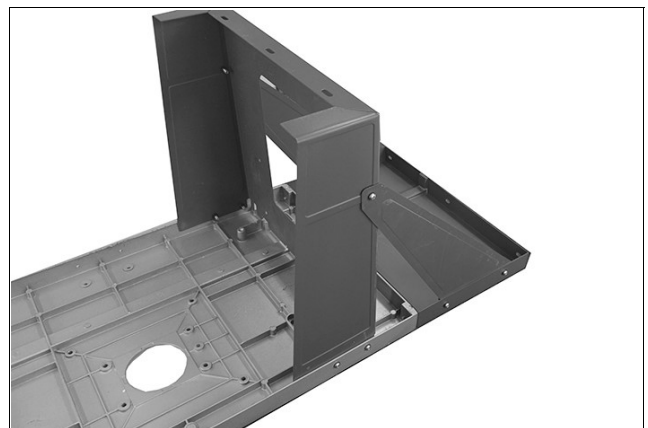
---

## ASSEMBLING THE TABLE

1. Lay the table top upside down on a flat surface.
2. Position one table extension and attach to the main table top using screws, washers and nuts.



3. Add a support frame to the main table and secure at each side using machine screws, washers and nuts.
4. Add two table side support plates as shown, loosely fixing in position using four screws and lock nuts.



**NOTE:** Always insert screws from the outside with nuts on the inside.

**NOTE: DO NOT** fully tighten yet.

5. Once all parts are loosely fitted, ensure the table and table extension are lying perfectly flat and gently tighten all screws, working from the centre to the outside. Take care when tightening not to move the extension table.
6. Repeat steps 1 to 5 for the other table extension and support plates.
7. Once all parts are securely tightened, turn the assembly over, checking that the table assembly does not rock.
8. If any rocking is detected, this must be rectified before continuing by loosening the screws on the offending parts and adjusting accordingly. Always take care not to disturb the alignment of the table extensions relative to the main table.

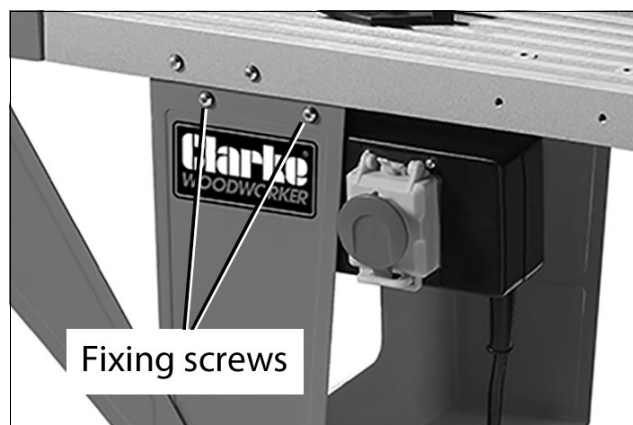
For your personal safety and that of others around you, the router table should be securely anchored when in use. This can be achieved by bolting or screwing it to a work bench through the holes in the table feet. Alternatively the table can be bolted onto a suitable board and clamped to the workbench etc with 'G' clamps or similar.

- Holes are provided in the frame for mounting the router table on a rigid surface or power tool stand. (fasteners not included).

## FITTING THE SWITCH ASSEMBLY

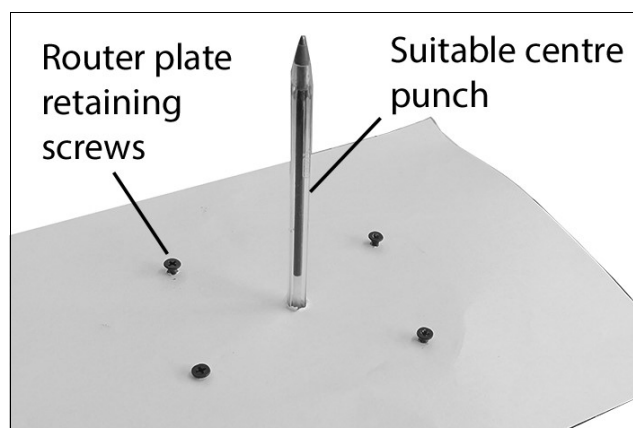
Fit the switch assembly as follows.

1. Unwrap the power cable and fit in position with two x-head machine screws inserted from the front of the table and secured with washers and nuts.
  - A socket/extension shank or screwdriver with socket bit will be very useful for holding the nuts on the inside.



## INSTALLING THE ROUTER AND BASE PLATE

1. Remove the skid plate from your router base to reveal the fixing holes.
2. Create a paper template to identify the location of the adapter plate against your chosen router.
  - The router must be mounted perfectly central on the adapter plate in order for the router bit to emerge from the centre of the table aperture.
3. Using a pointer, eg, rod, pencil, drill bit etc, establish the centre of the router chuck and set your template on this. Then mark the locations of the fixing holes on the template which can then be transferred to the adapter plate.
4. Mark these positions accurately and drill matching holes in the baseplate. These must line up with the corresponding holes in the router base. Use the original screws from the router to secure it to the adapter plate.



This assembly can now be mounted to the table from underneath with the router correctly aligned with the table aperture.



4 x 10mm countersunk screws offered from above will be required to secure the adapter plate to the underneath of the table.

The design of this mounting mechanism ensures a large variety of routers are compatible with the table as its down to the end user to create the correct fitment on the adapter mounting plate.

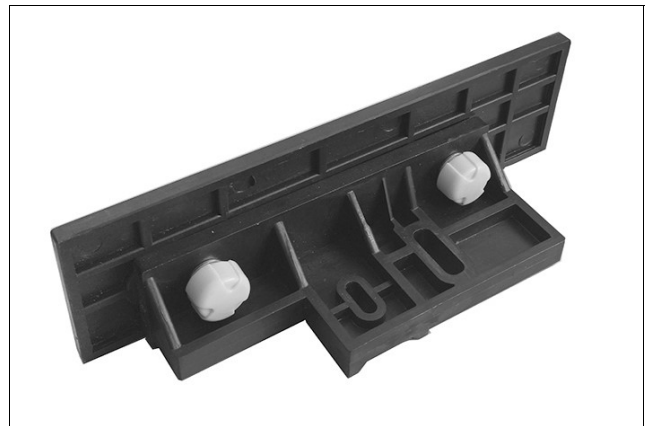
During setup the end user will need to bypass the router's dual action safety trigger for it to be suitable for use with the router table. This can be done with some adhesive tape or alternatively a velcro strap like the one shown. (NOT INCLUDED)

It should be considered that the majority of modern routers are equipped with similar safety devices which will need to be bypassed.

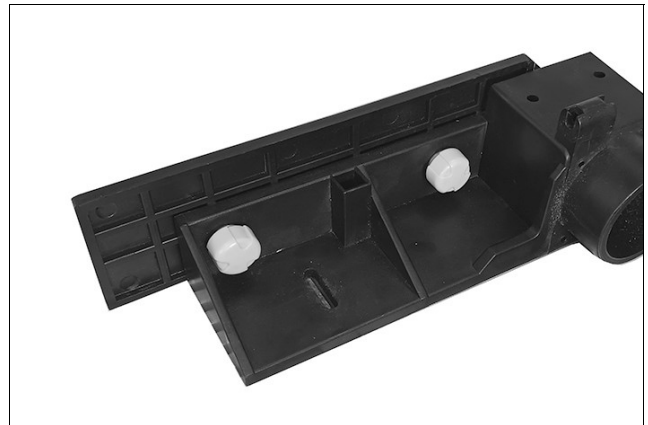


## INSTALLING THE FENCE ASSEMBLY

Using the smallest coachbolts, fasten the fence face plate to table bracket. Use washers and finger knobs as shown.



Using small coachbolts, attach the other fence to vacuum adapter bracket. Use washers and finger knobs as shown.



Position the completed fence assembly on the table so the holes line up with the table slots.

Use two coachbolts with two finger knobs to secure the fence assembly to the table top.



A transparent chip guard is provided for safety reasons which can be fitted to the fence assembly if required. Insert the hinge pin into the transparent chip guard and fence bracket.



## INSTALLING THE ROUTER BIT

Installing bits whilst the router is in situ will require the router to be extended. Select the desired bit and install. Fit the table insert closest to the size of the bit as follows, ensuring the bit does not touch the insert.

## FITTING THE TABLE INSERTS

This router table comes with three tabletop inserts in the following hole sizes for different router bits:

Hole diameter	Max bit dia
1-1 /4"	1-1/8"
1-7/8"	1-3/4"
2-1/8"	2"

**WARNING:** A 2-3/4" diameter router bit is the largest outer bit that can be used on this router table.

1. Select the table-top insert that accommodates the router bit to be used.
2. Push the insert into the large hole in the top of the router table.
3. Press down the tabs on the insert until they snap into place.
4. To remove, place a finger in the insert hole and gently pull up until the tabs disengage.



**DO NOT attempt to remove tabletop insert from the tabletop unless router bit has been removed from the router.**

## HEIGHT ADJUSTMENT

Extend the router until the bit protrudes through the table the required amount. When making height adjustments, ensure the router bit does not touch the transparent retractable guard. Operate the guard manually and check that the guard moves freely.

Before working on the final workpiece in due course, take test cuts on scrap pieces of wood to set the router and fence accurately.

## ATTACHING VACUUM EXTRACTION TO THE FENCE

The router table is provided with a dust extraction outlet, where a vacuum extraction system may be connected to the outlet at the rear of the table.

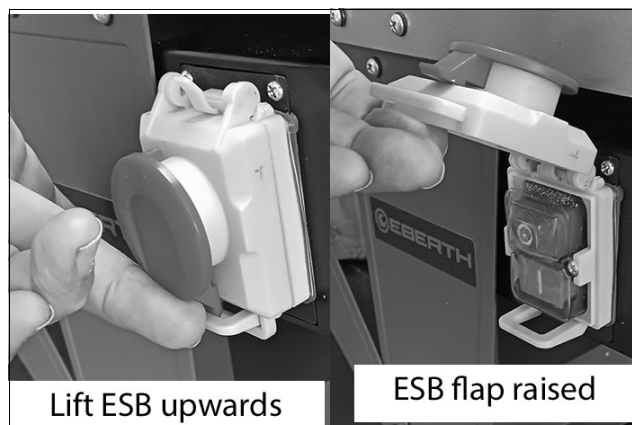
The connecting hose requires an inside diameter of 69mm to fit the outlet. The hose, ideally, should be a reasonably tight fit on the outlet. Just hold the router table fence assembly in place and push the nozzle into the port.

Note however, that this does not preclude the user from wearing a face mask to prevent the inhalation of dust particles. Due to the nature of the tool, some of the dust produced will be cast into the surrounding atmosphere and will not be collected.

Operating the router table without extract can result in an excessive build-up of sawdust and chips under the fence assembly and the overhead guard. This can hinder the performance of the router table and the fence assembly.

## CONNECTING THE ROUTER TO THE POWER SUPPLY

1. Plug the 13A router plug into the switch assembly below the table. Loosely tidy up the router power cable and secure safely with cable tie or similar.
2. Plug the table power cable into a convenient power socket.
3. Switch the router on after releasing and lifting the hinged Emergency Stop Button and pressing the green ON button. The hinged stop button must be lowered and clipped into position once the router is running.



Your router table is now fully assembled and ready for use.

## OPERATION AND ADJUSTMENT

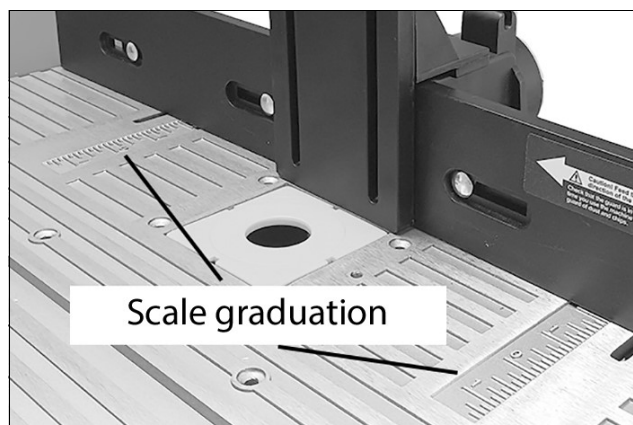
When making adjustments etc, always ensure the router is isolated from the electrical power supply by switching off and removing the plug from the socket.

**NOTE:** Always refer to the specific router operating instruction manual when making height and speed adjustments etc.

### FENCE ADJUSTMENT

The fence can be adjusted forward or backward a distance equal to the amount of material to be removed by the router bit.

1. To adjust, loosen the two hand knobs on the back of the fence on either the left or right side and slide the fence forward and backward to desired position.
2. Use the graduation marks to set the fence parallel to the side edge of the table.
3. Secure the fence with the hand knobs when positioned correctly.



- It is good practice to make test cuts on scrap pieces of wood to set all adjustments accurately.

### ADJUSTING THE FENCE FACING PLATES

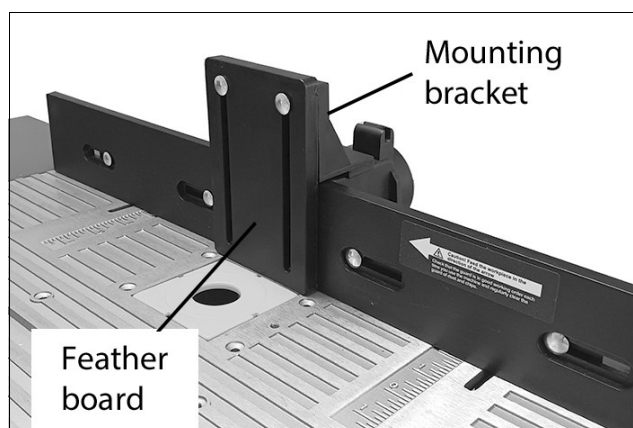
The fence facing plates are mounted on the front face of the fence.

1. Loosen the hand knobs on the back of the fence to adjust the fence facing plates from left to right to suit your workpiece, then tighten them securely when the facing plates are positioned correctly.

### FEATHER BOARDS

Two additional feather boards are supplied to assist in guiding the workpiece relative to the fence and the cutting bit.

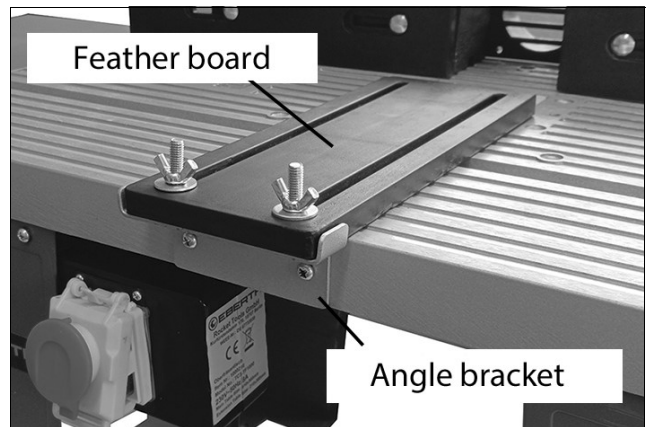
To fit the fence feather board, remove and discard the transparent guard, (if fitted), then bolt the fence feather board bracket to the fence assembly using two bolts and nuts. Add the feather board using two coachbolts and wingnuts as shown.



- This can be adjusted for height by slackening the mounting coach bolts and wingnuts.

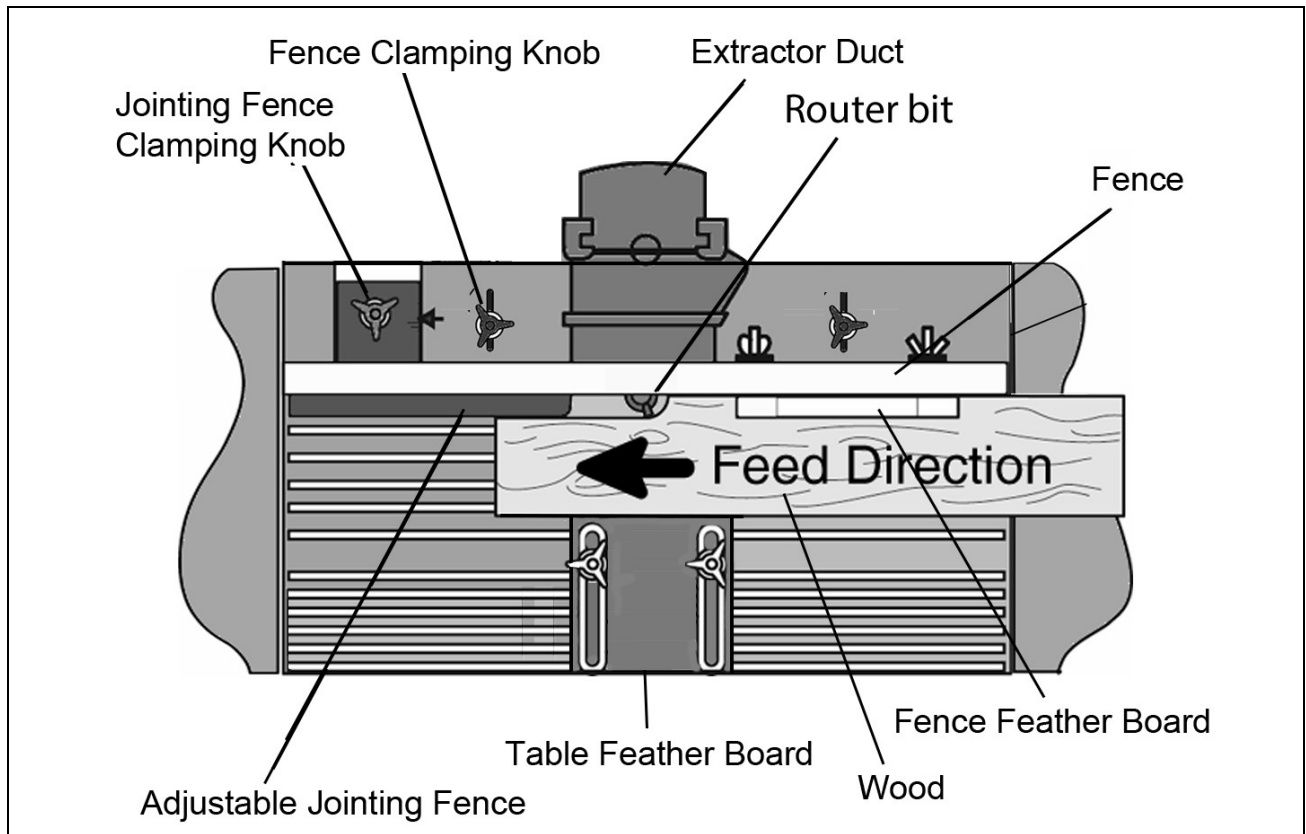
To fit the table feather board, first fit the metal angle bracket supplied, to the table top using 2 x machine screws.

Bolt the table feather board to the bracket top using coachbolts bolts, washers and wingnuts.



## ROUTING USING THE FENCE

1. Loosen the plunge lock and press the router body up to the stop. Lock the body in position.
  - The depth of the cut (1/4" is the maximum for each pass).
2. Set the router to the required speed (if you are not sure of the correct speed, experiment until you find a speed that creates the desired cut easily).



3. Check that the path of the cut is clear. Make sure no fingers or foreign objects are in the way.
  - Failure to keep your fingers away from the router bit can result in serious injury.

4. Start the router using the table start/stop button and feed the workpiece along the fence from right to left.
  - Feeding in this direction should mean that the rotation of the bit will tend to drive the workpiece towards the fence. Feeding from the opposite side would allow the bit to grab the workpiece and lift it away from the fence.
5. Hold the workpiece firmly. Be prepared for a small kick as the cutter engages the wood. Move the wood against the direction of rotation, pushing or pulling depending on the orientation and shape of the work piece.
6. Continue moving the workpiece along the fence until you reach the end of the wood.

## USING THE STARTING PIN

The starting pin is used to guide a small workpiece freehand when a bearing equipped router bit is being used. The fence does not need to be used with the starting pin.

The starting pin fits into a threaded opening on the top of the table near the table insert. Turn the pin clockwise to thread it into the table.

When working, offer the workpiece against the pin before feeding it across the router bit from right to left.

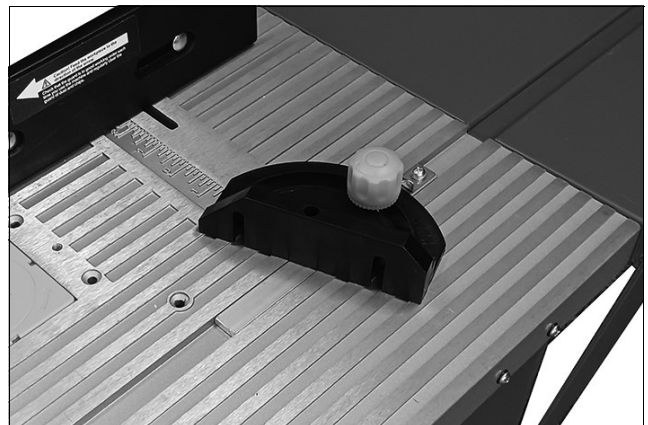


## USING THE MITRE GAUGE

To use the mitre, simply insert it into the slot on the table top and adjust to the required angle. The mitre gauge is now ready for use.

Switch the router on. Hold the workpiece firmly in position against the mitre gauge fence and slowly move it across the table.

**CAUTION: KEEP FINGERS SAFELY AWAY FROM CUTTING BITS BY USING PUSH STICKS ETC WHEN WORKING ON SMALL WORKPIECES.**



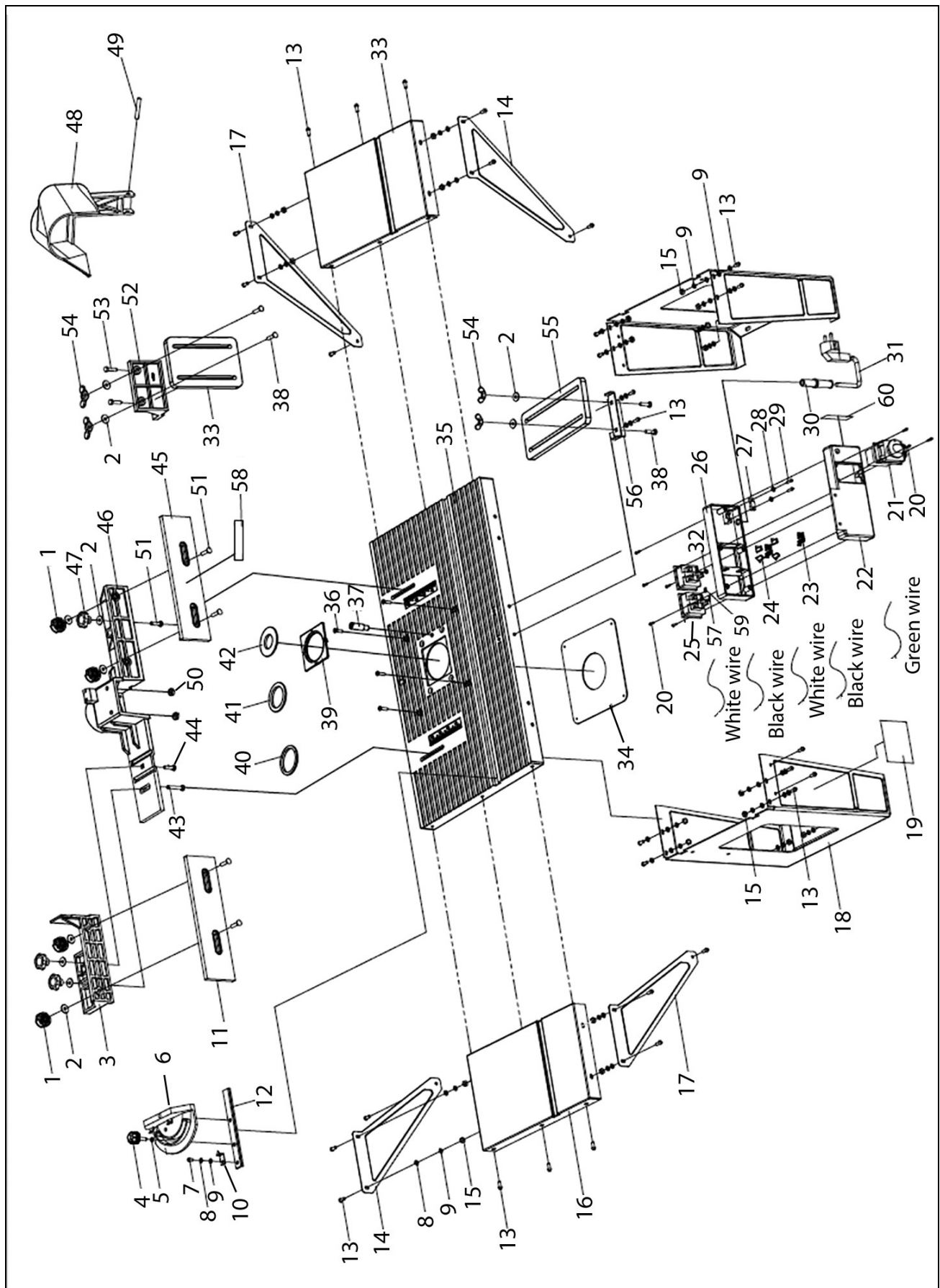
## CLEANING THE TABLE AND FENCE

With the machine turned off, remove sawdust and wood chips from under the fence assembly as needed.

Keeping this area clean will guarantee better router performance.



# COMPONENT PARTS DIAGRAM



## COMPONENT PARTS

ID	DESCRIPTION
1	Fence locking knob
2	Flat washer
3	Guide base B
4	Mitre setting knob
5	Washer
6	Mitre angle gauge
7	X-head pan head screw M5 x 8
8	Spring washer
9	Flat washer
10	Angle pointer
11	Left fence plate
12	Mitre guide bar
13	X-head pan head screw M5 x 16
14	Side table support plate A
15	Nut M5
16	Side table
17	Side table support plate B
18	Support frame
19	Brand label
20	X-head pan head screw st2.9 x 13
21	Power switch/stop button assembly
22	Front control box cover
23	Clip (flag-shaped)
24	Clip sleeve
25	Power socket (router)
26	Rear control box cover
27	Cable clamp
28	Flat washer
29	X-head pan head screw M4 x 14
30	Bend proof cable sleeve

ID	DESCRIPTION
31	Power cable
32	Toothed washer
33	Side table (short)
34	Router mounting plate
35	Main table
36	X-head c/sunk screw M5 x 14
37	Starter pin
38	Coach-bolt M6 x 30
39	Table insert plate
40	Table insert ring A
41	Table insert ring B
42	Table insert ring C
43	Coach-bolt M6 x 40
44	Coach-bolt M6 x 30
45	Right fence plate
46	Guide base
47	Guide locking knob
48	Hinged transparent guard
49	Dowel pin
50	Locknut M6
51	Coach-bolt M6x22
52	Feather board bracket
53	Bolt M6 x 40
54	Wingnut M6
55	Press board (long)
56	Angled mounting bracket
57	Grounding clamp
58	Instruction label
59	Wiring clip
60	Switch box label

# DECLARATIONS OF CONFORMITY



Fitzwilliam Hall, Fitzwilliam Place, Dublin 2

## DECLARATION OF CONFORMITY

This is an important document and should be retained.

We hereby declare that this product(s) complies with the following legislation:

2014/35/EU Low Voltage Directive  
2011/65/EU Restriction of Hazardous Substances (RoHS) Directive

The following standards have been applied to the product(s):

IEC 61058-1-1:2016, IEC 62321-1:2013, IEC 62321-2:2021, IEC 62321-5:2013, IEC 62321-6:2015,  
IEC 62321-4:2013+AMD1:2017, IEC 62321-7-1:2015, IEC 62321-7-2:2017, IEC 62321-3-1:2013,  
IEC 60884-1:2022, IEC 62321-8:2017, ISO 17075-1:2017

The technical documentation required to demonstrate that the product(s) meet(s) the requirement(s) of the aforementioned legislation has been compiled and is available for inspection by the relevant enforcement authorities.

The CE mark was first applied in: 2025

Product Description: Router Table  
Model Number(s): CRT1030  
Serial/Batch Number: Refer to product/packaging label  
Date of Issue: 20/06/2025

Signed:

J.A. Clarke  
Director

CRT1030 CE Clarke DOC 06/2025

Page 1 of 1



Hennall Street, Epping, Essex, CM16 4LG

## DECLARATION OF CONFORMITY

This is an important document and should be retained.

We hereby declare that this product(s) complies with the following legislation:

2014/35/EU Low Voltage Directive  
2011/65/EU Restriction of Hazardous Substances (RoHS) Directive

The following standards have been applied to the product(s):

IEC 61058-1-1:2016, IEC 62321-1:2013, IEC 62321-2:2021, IEC 62321-5:2013, IEC 62321-6:2015,  
IEC 62321-4:2013+AMD1:2017, IEC 62321-7-1:2015, IEC 62321-7-2:2017, IEC 62321-3-1:2013,  
IEC 60884-1:2022, IEC 62321-8:2017, ISO 17075-1:2017

The technical documentation required to demonstrate that the product(s) meet(s) the requirement(s) of the aforementioned legislation has been compiled and is available for inspection by the relevant enforcement authorities.

The UKCA mark was first applied in: 2025

Product Description: Router Table  
Model Number(s): CRT1030  
Serial/Batch Number: Refer to product/packaging label  
Date of Issue: 20/06/2025

Signed:

J.A. Clarke  
Director

CRT1030 UKCA Clarke DOC 06/2025

Page 1 of 1

# A SELECTION FROM THE VAST RANGE OF

# Clarke®

## QUALITY PRODUCTS



**AIR COMPRESSORS**  
From DIY to industrial, Plus air tools, spray guns and accessories.

**GENERATORS**  
Prime duty or emergency standby for business, home and leisure.

**POWER WASHERS**  
Hot and cold, electric and engine driven - we have what you need

**WELDERS**  
Mig, Arc, Tig and Spot. From DIY to auto/industrial.

**METALWORKING**  
Drills, grinders and saws for DIY and professional use.

**WOODWORKING**  
Saws, sanders, lathes, mortisers and dust extraction.

**HYDRAULICS**  
Cranes, body repair kits, transmission jacks for all types of workshop use.

**WATER PUMPS**  
Submersible, electric and engine driven for DIY, agriculture and industry.

**POWERTOOLS**  
Angle grinders, cordless drill sets, saws and sanders.

**STARTERS/CHARGERS**  
All sizes for car and commercial use.



## PARTS & SERVICE:

## 0208 988 7400

**Parts Enquiries**  
[Parts@clarkeinternational.com](mailto:Parts@clarkeinternational.com)

**Servicing & Technical Enquiries**  
[Service@clarkeinternational.com](mailto:Service@clarkeinternational.com)

SALES: UK 01992 565333 or Export 00 44 (0)1992 565335

**Clarke® INTERNATIONAL** Hemnall Street, Epping, Essex CM16 4LG  
[www.clarkeinternational.com](http://www.clarkeinternational.com)